

# The Christow News



❖ August 2008

## CHRISTOW SHOW SPECIAL

*Inside*

**Cup Winners List**

**Photo spread** – *Show Time!*

**Your letters and club News**

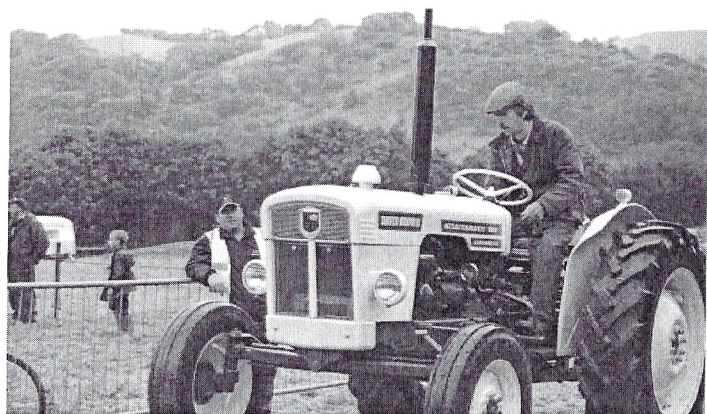
**What's On**

**Issue 28**

## 79<sup>th</sup> Christow & District Show - *What's a little rain again?..*

Well the sun certainly didn't shine on Christow show this year. Although the morning dawned grey and dry, by 10 o'clock the weather had closed in and rain became the order of the day. Despite the damp most events took place as planned and ponies and motorcycles jumped, carriages paraded the field, sheaves were pitched, dogs and sheep were shown, and cream teas consumed. In the hall there was a near record 453 entries of flowers, vegetables, cookery, photographs and crafts. The entries had come from all corners of the show district with a few from further afield and made a splendid display. Elphric the jester kept us all entertained and the jazz band put a spring in our steps.

Certainly the numbers at the gate were down and for the second year running, it looks like the show may have to dip into its reserves. But for those who were there, I think all will agree that it was still a great day. And for those who work throughout the year to organise the show – thank you.



Everything from two wheels, to four wheels to four legs, more fur, feathers, people & produce inside.....

[www.christownews.com](http://www.christownews.com) email: [contribute@christownews.com](mailto:contribute@christownews.com)



## Christow & District Show Cup Winners List - 2008



Christow & District Show Vice President bowl for competitor chosen by the President (Conservation Class)  
P. Harper

### Flowers

Class 1: Silver cup presented by the late Mrs. G. T. Archer for an arrangement for the Show President's table  
S. Wilson

Class 2: Silver cup presented by the late Mrs. H. Edwards  
J. Hoskin

Class 6: Silver tray presented in the memory of Mrs. H. Archer  
L. Ryder

Mrs. Archer – Memorial cup for the Top Vase  
S. Thomson

Classes 9 – 11 aggregate: Cup presented by Mr. J. Govier  
S. Wilson/L. Ryder

Classes 16 – 18 aggregate: Cup presented by Mrs. R. Nicholls for dahlias  
S. Wilson/Lynda Ryder

Class 28: Cup for best floral hanging display  
V. Norman

Class 29: Cup for best floral hanging display in one container – commercial  
Canonteign Falls

Class 30: Cup for best floral display in situ  
J. Banks

Class 31: Cup for best floral display in situ – commercial  
Walled Garden, Dunsford

### 16 years and under

Classes 32 – 36 aggregate 5 – 7 years: Cup presented by P. C. Lindsay  
H. Collins

Classes 37 – 41 aggregate 8 – 11 years: Springfield Perpetual Challenge Cup presented by Mesdames Nicholls & Northcott  
K. Grist/B. Lebersorge

Classes 42 – 45 aggregate 12 – 16: Cup presented by the late A. H. Langston  
D. Grist

Classes 32 – 45: Bernard May Challenge cup for best exhibit  
K. Grist

### Horticulture

Class 51: George Archer Memorial cup for the Top Tray  
P. Stacey

Challenge cup donated by D. Harvey for the best exhibit in the vegetable section  
P. Stacey

Classes 8 – 27; 52 – 92 aggregate: Gordon Edwards Memorial cup  
P. Stacey

Class 93: Challenge cup donated by R. C. Baber for the best allotment in Christow village  
M. Richards

### Cookery, Preserves, Eggs

Classes 94 – 100 aggregate cookery: Mary Scott Perpetual Challenge cup  
J. Banks

Classes 101- 105 aggregate preserves: Cup  
Wyn Hedley

Class 109: Men's cookery cup  
D. Wyatt

Class 110: Chairman's prize for Teign Valley champion boiled egg  
T. Archer

Classes 111 – 122 aggregate beverages: Cup  
Zoe Clark

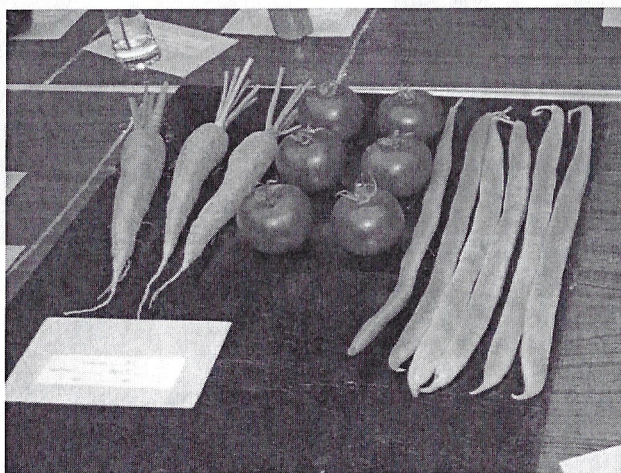
### Photography

Class 123: Perpetual Challenge Shield donated by C. Towell  
C. Clayburn

Class 124: Perpetual Challenge Shield donated by C. Towell  
A. Hyne

## Cup Winners List - continued

Class 125: Digital photography cup	A. Weaving
<b>Agriculture</b>	
Classes 126 – 133: Cup donated by the late Mrs. E. H. Roger- Edwards	G. Harvey
Perpetual Cup for best exhibit of sheep donated in memory of the late A. D. J. Harvey	N. Burrington
Classes 136 – 141: Cup for sheep classes most points	N. Burrington
<b>Carriage Driving</b>	
Class 143: Cyril Smale memorial cup	J. Green
Class 144: Johnny James Memorial cup	B. Adams
<b>Horse &amp; Pony</b>	
Classes 145 – 150 aggregate: Tom Preston Memorial cup	A. Rusden
Class 145: Shield donated by Mr. & Mrs. Bawden	K. Colquhoun
Class 146: Shield donated by Mr. & Mrs. Clapham	A. Rusden
Class 150: Newdale Perpetual Cup	K. Colquhoun
Classes 155, 158, 161 aggregate: Taverner Challenge cup	L. Bickham
Classes 154, 157, 160, 163 aggregate: Challenge cup presented by the late H. Hamlin	A. Riggs
Classes 156, 159, 162 aggregate: Challenge cup presented by the late Mrs. C. Hoskins	A. Dudman
<b>Sporting Events</b>	
Class 182: Cup for men's sheaf pitching donated by Messrs. Stafford Clark	P. Dore
Class 183: Cup for ladies sheaf pitching donated by Messrs. Stephen & Stafford Clark	S. Woodley
<b>Tractors</b>	
John Clarke Memorial Cup	M. Thomson
<b>Dogs</b>	
Class 200: Perpetual Rose Bowl for best dog in show district donated by Mrs. F. M. Harris	Sharon Newman with Skarlet
Teignmouth Dog Training Club Tankard for the best in the show	Sharon Newman with Ocher



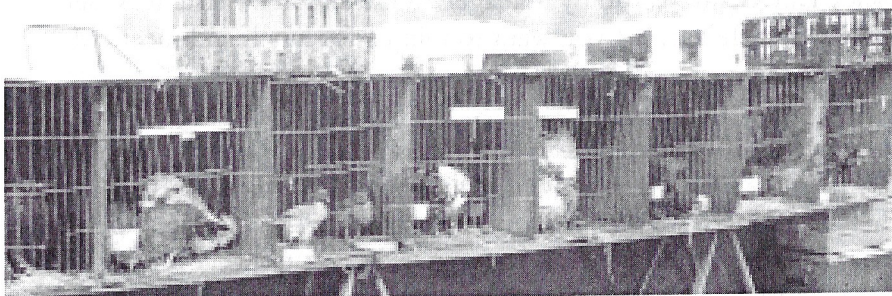
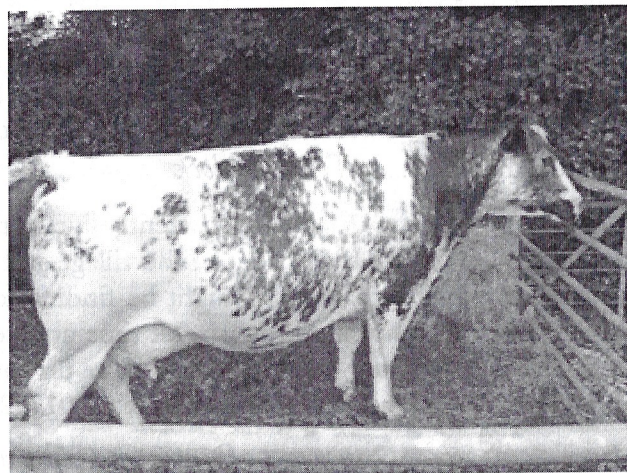
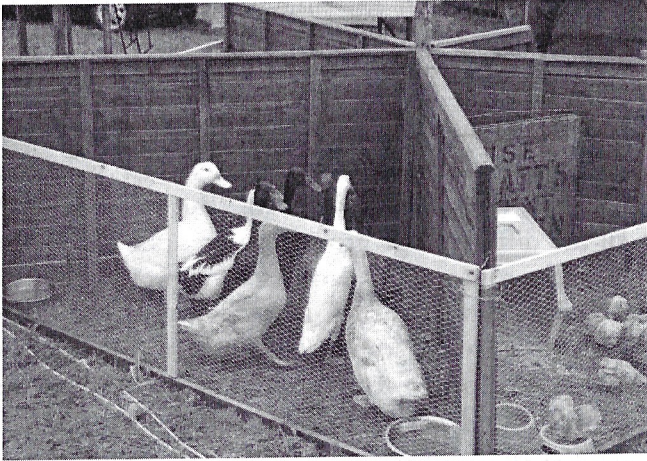
# *Christow Show, lots to see and do inside.....*

A Big Thank you to our photographers, Claire Cook, Richard Weaving and Jan Deane and to Nigel Peirce for his formatting skills!



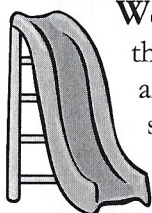
Opposite page bottom right, Layne Fields residents got together earlier this month to enjoy a Barbeque night, thanks to Paul for the photo.

*And out.....*



## Your Letters and Club News

I would just like to thank some people for the kindness shown to me on Tuesday 29<sup>th</sup> July, when our cat was accidentally knocked over and killed. I was devastated, but sadly these things happen. Anyway thanks to those of you who said kind words, but a special thank you to Dan Clarke for all his kindness and consideration. Thank you all very much and best wishes, *Dee and Mike Sharp*.



We came to Christow a few weeks ago with our 2 young children and were absolutely delighted with the play area there. It is the best one we have ever seen and we have seen quite a few as we are always looking for them when we travel. The children enjoy them so much. But this one is so structured, spacious, and catered carefully for all the different age groups: an area for the young ones, and a different for the older ones, with tunnels, ropes, slides, ladders, swings etc... the fun never stops!!! It is amazing that such a small village can have such a wonderful play area for our little ones, where other councils (like ours in Helston, Cornwall) cannot even put together more than 2 swings in a muddy pit for the children in the main public area of the town at the boating lake: shame on them! And well done to Christow. We'll definitely come back. *Mr & Mrs Prior & their children Elliot, 3 & Jack, 18 months* - Well done Play Park Committee - it's nice to see that all your hard work is appreciated. (Ed)

**Tracey Fidock, Chairperson to the Play Park Committee reports:-** The Play Park Committee have now apologetised to Ugbrook Land Fill although we were not at fault over the remark about the VAT. The new part of the play park is now open. It still needs some work before it is finished, so please support us on our forthcoming events such as the open day in the play park on Saturday 30<sup>th</sup> August. Also on Saturday 20<sup>th</sup> September, our Grand Draw/Auction and the Table Top sale during the day plus the live band "Dirty Money" in the evening at TVCH. With your support, we can then get this project finished. We would like to say a huge thank you to A. J. Orme for letting us borrow his digger for a day and to Adrian Cann for lots of soil to enable us to level the site. Thanks also to George Smale and Seb Pegley for giving up a day and along with Jimmy McCular and Paul Hoskins who all worked hard to prepare the ground and to lay the safety surface. The Play Park Committee is made up of volunteers but extra thanks must also go to some members that have done more than their fair share, Sarah Cann, Colin Fidock, Rachael Pegley and myself all of whom have spent days working in the park. Sadly I have to report that the zip wire is out of action at the moment as some bright spark decided to tie knots in the seat chain so now it will not pass the safety check. We are now trying to sort out a solution to this problem. We did a door to door collection for our stall at the Christow Show and would like to thank everyone for their kind donations of bottles etc, it was a huge surprise to see such support so once again thank you all very much. Any donations of time, money or goods, or for event tickets or details please contact the Fidocks 252833 or Sarah Cann 252744 or any of the other Committee members. *Tracey Fidock*

**Accommodation Required** I currently live in the village and am looking to rent a self contained unit, either flat or bed sit, not too far out of the village and would consider sharing with someone who maybe has a larger property that perhaps they might be finding too much to cope with on their own. I am in my early sixties and am fit and well and work full time at Exeter University and so would be out from 7.20am until 6.00pm Monday to Friday. This matter is quite urgent now. Can you help or do you know of anyone looking for a tenant? Please phone Ms A M Walshe on 01392 269171 if you can help in any way.

**Acorn Community Support** Badjogle - Congratulations to Dr. Clunie and his son Ben for completing their cycle run from John O'Groats to Lands End. Thank you for your sponsorship and good wishes.

Thank you to the family and friends of the late Reverend Humphreys for your donations in lieu of flowers.

The Acorn Club - previously called the Valley Day Centre is run by Manager Annie and her assistant Nesta who work together to ensure everyone has an enjoyable day. If you want to join us for lunch and meet old and new friends please contact Joan on 01647 252701.

**Christow W.I.** Would like to thank the other local W.I. groups who so kindly joined forces to stage the most special exhibition of "Kitchen Items from the Past" for the Christow Show. We would also like to thank non W.I. people in the village for their most interesting contributions to the display. So many people told us how much they enjoyed their "Journey back into the past" and also enjoyed guessing what the mystery items were used for. Once again - Many thanks to all who contributed to a really interesting display and to all who gave us their kind remarks on our efforts. *Noreen Westwood*

## Bridford & Teign Valley Garden Club



The Garden Club's postponed BBQ was finally held at Sowton Mill on July 24<sup>th</sup>. Our hosts, Anne and Sonja, had kindly made their shared garden available on yet another "dodgy" summer afternoon. However, the lovely garden made up for any disappointment in the weather and everyone had the opportunity to take the delightful walk between the leat and the river to see the many flowering perennials and unusual shrubs. A serviceable BBQ in a converted oil drum cooked our meat with Marjorie Short in control and, together with delightful salads and puddings, a good feast was enjoyed. Members had made a grand show of their flowering pot plants and baskets of vegetables with Ann Lord, Paul French and Ken carrying away the prizes.

Our second major event, again attended by over 40 members and friends, was the safari around the gardens of Dry Lane, Christow. Unfortunately the heavens opened mid way through the afternoon, but the monsoon later cleared in time for us to enjoy a lovely cream tea in the sub tropical gardens of Ann and Tom Edwards. Thanks to their generosity, the club was able to send a donation of over £100 to the Children's Hospice. Apart from 4 small but immaculate gardens, we visited 2 mature establishments of several acres, both of immense interest. We are grateful to all our hosts for the hard work they put in before the event.

Our meeting scheduled for September 4<sup>th</sup> has had to be cancelled for health reasons, however an alternative outing has been arranged, but on a different date. We will visit the Reedy Meadows Nursery at Dunsford on September 18<sup>th</sup>. This will be followed by tea at the Walled Garden, which is in itself worthy of inspection, apart from the excellent tea provided by Ian. Please be in touch with Frank for details and directions (252 816).

Our ever growing club always welcomes new members and although our programme of summer outings will shortly be coming to a close, our winter talks will soon be with us. For details phone Pamela (253 051).

## St James Church

**Christow churchyard** - You will have noticed that after the churchyard was looking splendid with the daffodils and primroses, the standard had dropped dramatically until lately it looked like a hay field after the sheep had been through it! This was because the excellent firm that were cutting it for us was taken over by another and we got left out. As you will now see it has been cut but we are left with a thick layer of hay/silage (unless some kind souls would like to offer to rake it all up for us, it's a big job as I know!).

**Christow Church Fete** - Unity's deadline was just before the fete so we couldn't report on it; (though Christow News did a splendid job - thank you.) We raised nearly £1,000 which is about the same as other years, thank you to all who helped and all who came. It sounds a lot of money but does not go far compared with what the church has to pay out, the insurance alone costs well over £2,000. The atmosphere down in the hall did not seem the same as when we were able to have it up at Court Barton so we are hoping for a new and exciting venue next year, which will make a huge difference.

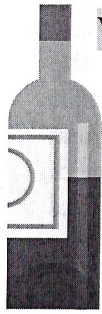
**Christenings** - Those children who were baptised in our church have received a toy type cube, a bit like a Rubric's cube, of The Lord's Prayer, on the anniversary of their christening. This was only started a few months ago so if you haven't had yours yet, it will come, hopefully on the right date. If you have a child, under about 12, who was christened somewhere else and would like to have one please let Briony know, or come and ask her and you can see what they are.

**Songs of Praise and Barbecue** - This was held on Sunday 13<sup>th</sup>, July in the garden of the Old Rectory, which could not have given us a more beautiful setting. We were very fortunate to have a group of young people from a church in Cullompton to play and lead the singing, the theme was the Good Samaritan, and in Dr. Daphne West's talk she emphasised that being a good Samaritan didn't only mean helping those people we like but also those whom we don't want to help. The weather was good - it didn't rain! The company was good, the food was excellent. So, if you didn't manage to get there come and join us next year, it will be at approximately the same date, so make a note in you diaries, you won't be disappointed.

Christow church Cleaning: Ann and Gareth Pike

Flowers: 22nd. August - 4th September: Rosemarie Canvin 5th. - 18th. September: Pam Fay

## What's on



**WINE SALES & COFFEE MORNING** On Friday 12<sup>th</sup> September between 10am and 12 noon at Penton Chapel, Christow, I am having a fund raiser for the charity Children with Leukaemia for whom I am running the New York Marathon in November. What's on?? Your opportunity to come and buy some of the latest sample wines as tried and tested by our local wine expert and writer Susy Atkins. Have coffee, buy a cake or two, some produce, take part in the bring and buy and have a go at the draw. Bring friends to have a pleasant morning out. Everyone welcome to our home. Donations of cakes, draw prizes and produce would be very welcome.



*Penny Clapham* (01647-253066)

**Open Studios, 13th to 21st September 2008** Your local artists will again be opening to show you their latest art creations for "Devon 9 Days of Art". Venues are at Nogsland, Eastern Hill Farm and Strawberry Hill. Brochures giving details are available at local stores- "Trail 8" *Sue Ahmed*

**Table Top Sale – Saturday, November 1<sup>st</sup>** Our annual event will be held as usual in the Teign Valley Community Hall. Tables can be hired for £5, or you may be in time to book an **“Early Bird” special before the 31<sup>st</sup> August**, only £4 per table. Please phone *Sue Griffin* on 252 731.

**Christow Parish Council Meeting** The next meeting is on Wednesday 10th September

To access the Parish Council's website go to [www.teignbridge.info](http://www.teignbridge.info), then click on 'Community' in the left hand pane, then click on 'Parish Councils & Community Info', then click on Christow and then on Christow Parish Council. Save this in your Favourites Folder so that you can get to it quickly in the future or use the link from the Christow News website. [www.christownews.com](http://www.christownews.com)

**Meetings are held in the Bowden Room of the Teign Valley Community Hall and begin at 7.30 pm.**

**Bridford & Teign Valley Garden Club** - We will visit the Reedy Meadows Nursery at Dunsford on September 18<sup>th</sup>. This will be followed by tea at the Walled Garden, which is in itself worthy of inspection, apart from the excellent tea provided by Ian. Please be in touch with *Frank* for details and directions (252 816).

**Play Park Committee** - Open day in the play park on Saturday 30th August. Saturday 20<sup>th</sup> September, our Grand Draw/Auction and the Table Top sale during the day, **plus** the live band "Dirty Money" in the evening at TVCH. For event tickets or details please contact the *Fidocks* 252833 or *Sarah Cann* 252744 or any of the other Committee members.

**Advance Notice** – Unfortunately it looks as though the Christow Firework Display will not be re-instated this year after all. If anyone is still interested in taking this on or helping out in any way then please contact The Christow News, telephone or email contact details below:

If you would like to contribute to **The Christow News** then just telephone with any suggestions you might have for articles or items that you would like to see included.

It couldn't be easier. We are happy to write up articles for you or you can submit your own copy. The editorial group consists of – Paul & Fiona Gardiner, Nigel Peirce, Claire Cook and Jan Deane. Contact details are c/o Northwood Farm, Christow, EX6 7PG - 01647 252915 – or 252974 **email [contribute@christownews.com](mailto:contribute@christownews.com)**. Alternatively articles can be left at the Christow Stores.